

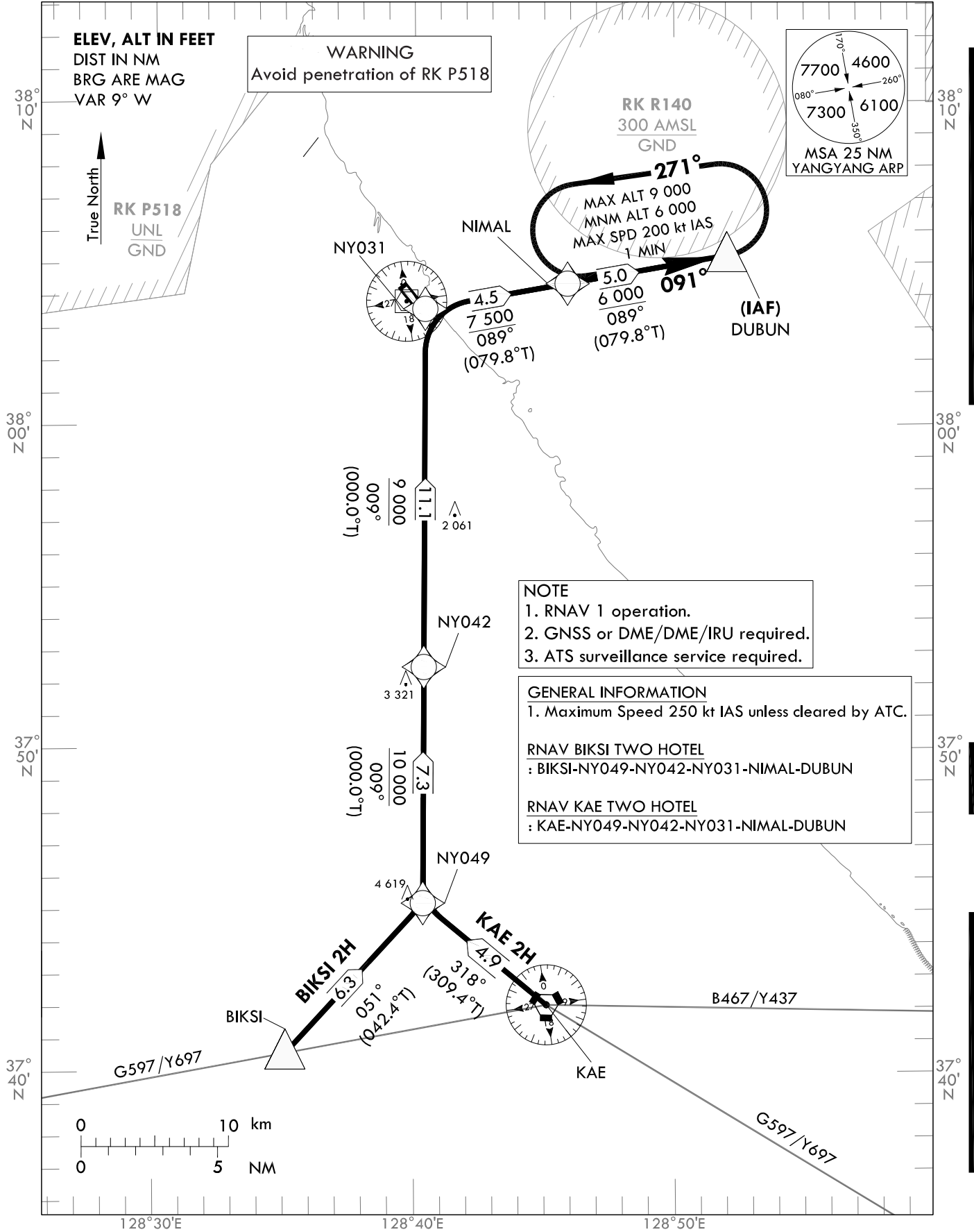
STANDARD ARRIVAL CHART
INSTRUMENT(STAR) - ICAO

TRANSITION ALT 14 000
TRANSITION LVL FL 140

GANGNEUNG APP 124.6
YANGYANG TWR 118.85
124.375

YANGYANG/Intl(RKNY)
RWY 33
RNAV KAE 2H
RNAV BIKSI 2H

Note : Arrival under ICAO Flight Procedures.



Change : Information of standard instrument arrival procedure for RWY 33.

YANGYANG/Intl(RKNY)
RWY 33
RNAV KAE 2H
RNAV BIKSI 2H

AERONAUTICAL DATA TABULATION

Standard Instrument Arrival Procedure Coding Tables

RNAV KAE 2H												
Serial Number	Path Descriptor	Waypoint Identifier	Fly-over	Course/Track °M(°T)	Distance (NM)	Turn direction	Altitude (ft)	Speed (kt)	Coordinates	VPA/TCH*	Navigation specification	Remarks
001	IF	KAE	-	-	-	-	-	-	37°42'02.8"N 128°45'13.6"E	-	RNAV 1	-
002	TF	NY049	-	318(309.4)	4.9	-	-	-	37°45'11.2"N 128°40'24.7"E	-	RNAV 1	-
003	TF	NY042	-	009(000.0)	7.3	-	+10 000	-	37°52'29.4"N 128°40'25.1"E	-	RNAV 1	-
004	TF	NY031	-	009(000.0)	11.1	-	+9 000	-	38°03'34.1"N 128°40'25.8"E	-	RNAV 1	-
005	TF	NIMAL	-	089(079.8)	4.5	-	+7 500	-	38°04'21.6"N 128°45'59.8"E	-	RNAV 1	-
006	TF	DUBUN	-	089(079.8)	5.0	-	+6 000	-	38°05'14.5"N 128°52'13.8"E	-	RNAV 1	IAF

RNAV BIKSI 2H												
Serial Number	Path Descriptor	Waypoint Identifier	Fly-over	Course/Track °M(°T)	Distance (NM)	Turn direction	Altitude (ft)	Speed (kt)	Coordinates	VPA/TCH*	Navigation specification	Remarks
001	IF	BIKSI	-	-	-	-	-	-	37°40'32.0"N 128°35'04.0"E	-	RNAV 1	-
002	TF	NY049	-	051(042.4)	6.3	-	-	-	37°45'11.2"N 128°40'24.7"E	-	RNAV 1	-
003	TF	NY042	-	009(000.0)	7.3	-	+10 000	-	37°52'29.4"N 128°40'25.1"E	-	RNAV 1	-
004	TF	NY031	-	009(000.0)	11.1	-	+9 000	-	38°03'34.1"N 128°40'25.8"E	-	RNAV 1	-
005	TF	NIMAL	-	089(079.8)	4.5	-	+7 500	-	38°04'21.6"N 128°45'59.8"E	-	RNAV 1	-
006	TF	DUBUN	-	089(079.8)	5.0	-	+6 000	-	38°05'14.5"N 128°52'13.8"E	-	RNAV 1	IAF

HOLDING PROCEDURE												
Holding Identification	Path Descriptor	Waypoint Identifier	Fly-over	Course/Track °M(°T)	Time (Min)	Turn direction	Altitude (ft)	Speed (kt)	Coordinates	VPA/TCH*	Navigation specification	Remarks
RNAV KAE 2H	HM	DUBUN	Y	091(081.7)	1	L	-9 000 +6 000	-200	38°05'14.5"N 128°52'13.8"E	-	RNAV 1	1 MIN (Outbound Leg)
RNAV BIKSI 2H	HM	DUBUN	Y	091(081.7)	1	L	-9 000 +6 000	-200	38°05'14.5"N 128°52'13.8"E	-	RNAV 1	1 MIN (Outbound Leg)

* The term TCH equates to the use of the term RDH, within this context of the FAS data block.

Change : Information of holding procedure and ALT restriction for NY049, NY042.